

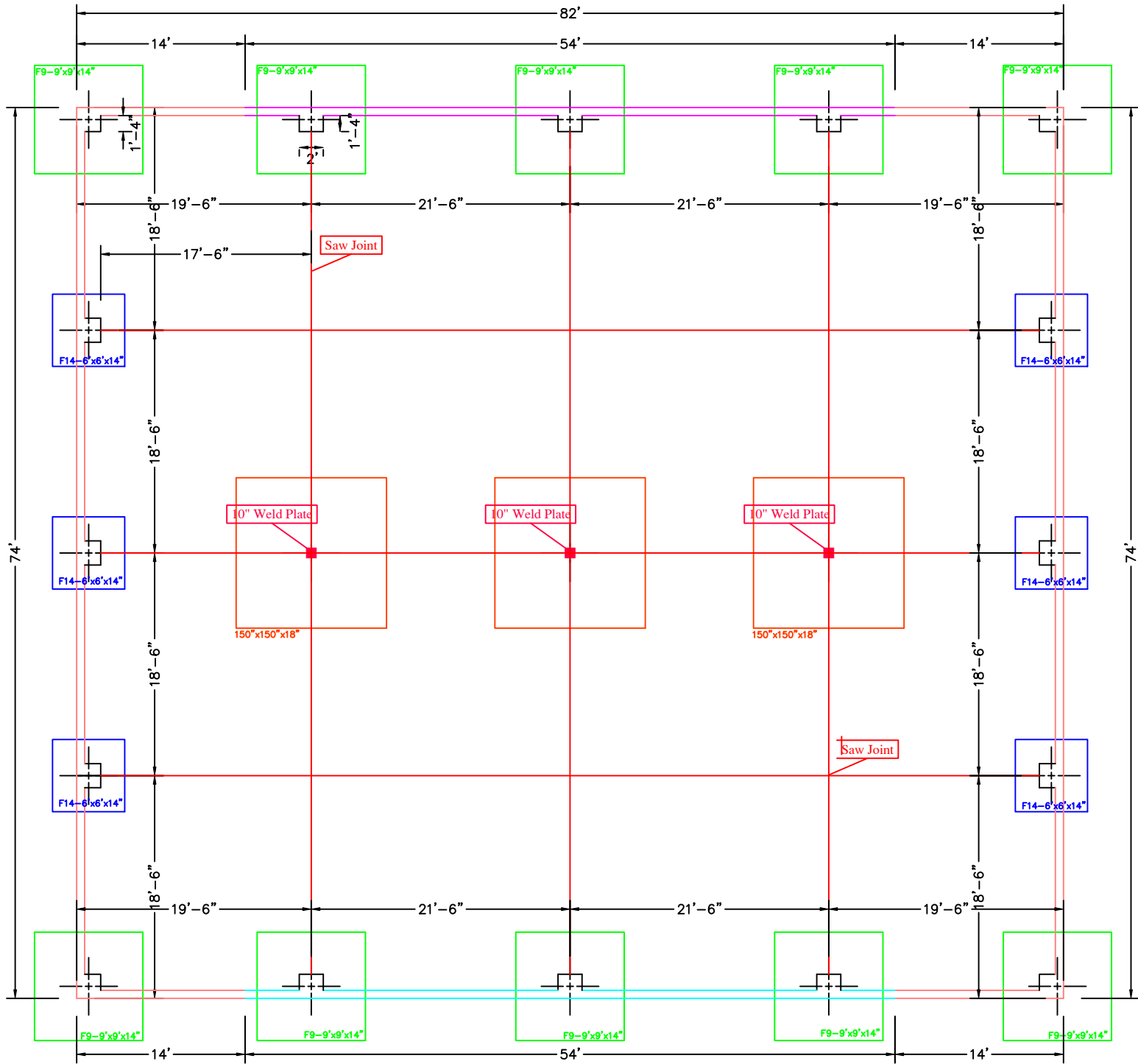
# Auto Crete Commercial

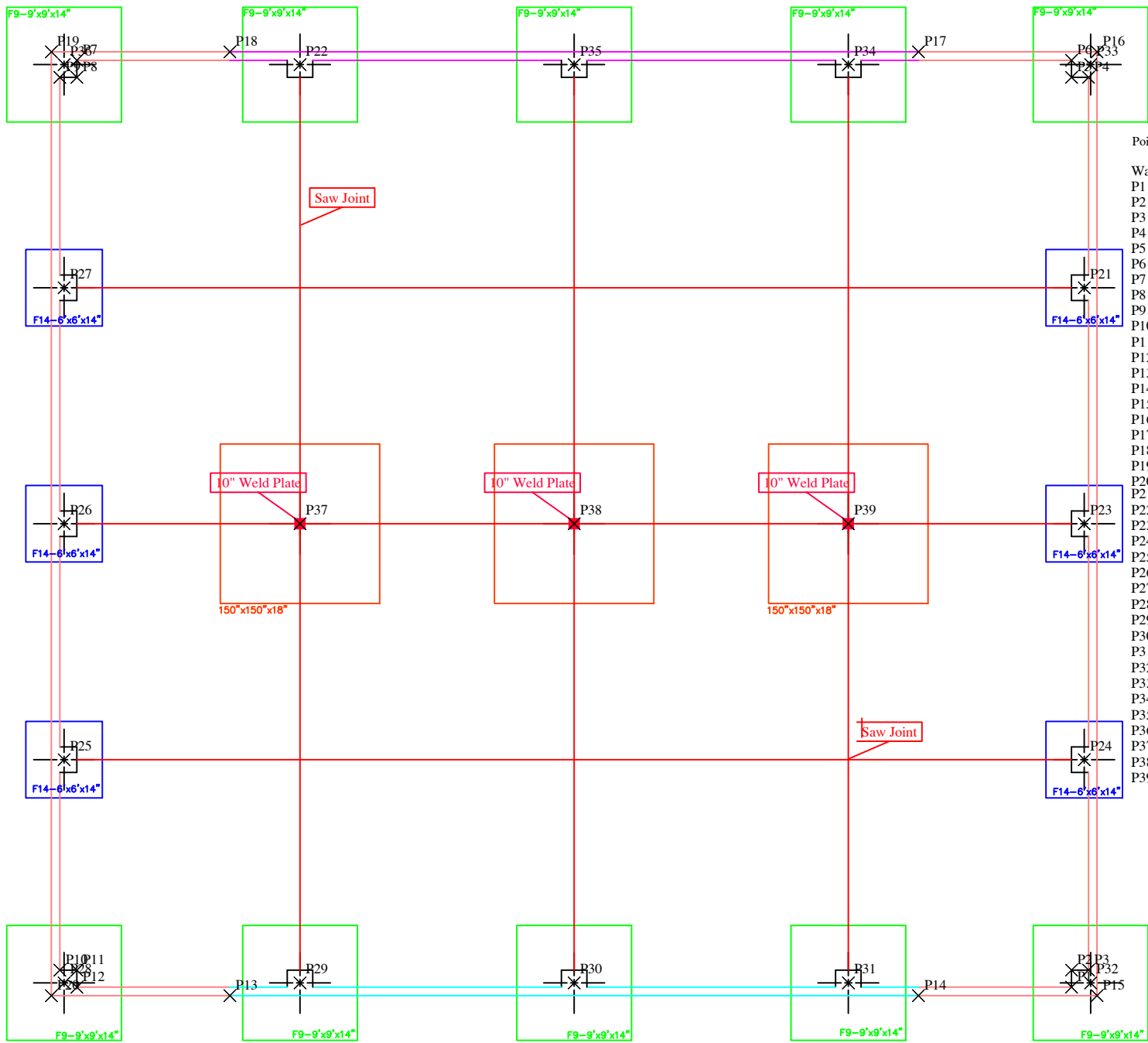
1. Foundation Plan
2. Total Station Point Layout
3. Concrete & Rebar Takeoff
4. SteelPly Form Layout
5. Panel Shipment
6. SymPly Form Layout
7. Radius Forming
8. Gang Forming
9. Slopped Wall & Panel Laydown
10. Details
11. Tank Program
12. Proshore

Call For An Online Demonstration

GDB Software, Inc.  
928.925.2177  
[www.gdbsoftware.com](http://www.gdbsoftware.com)

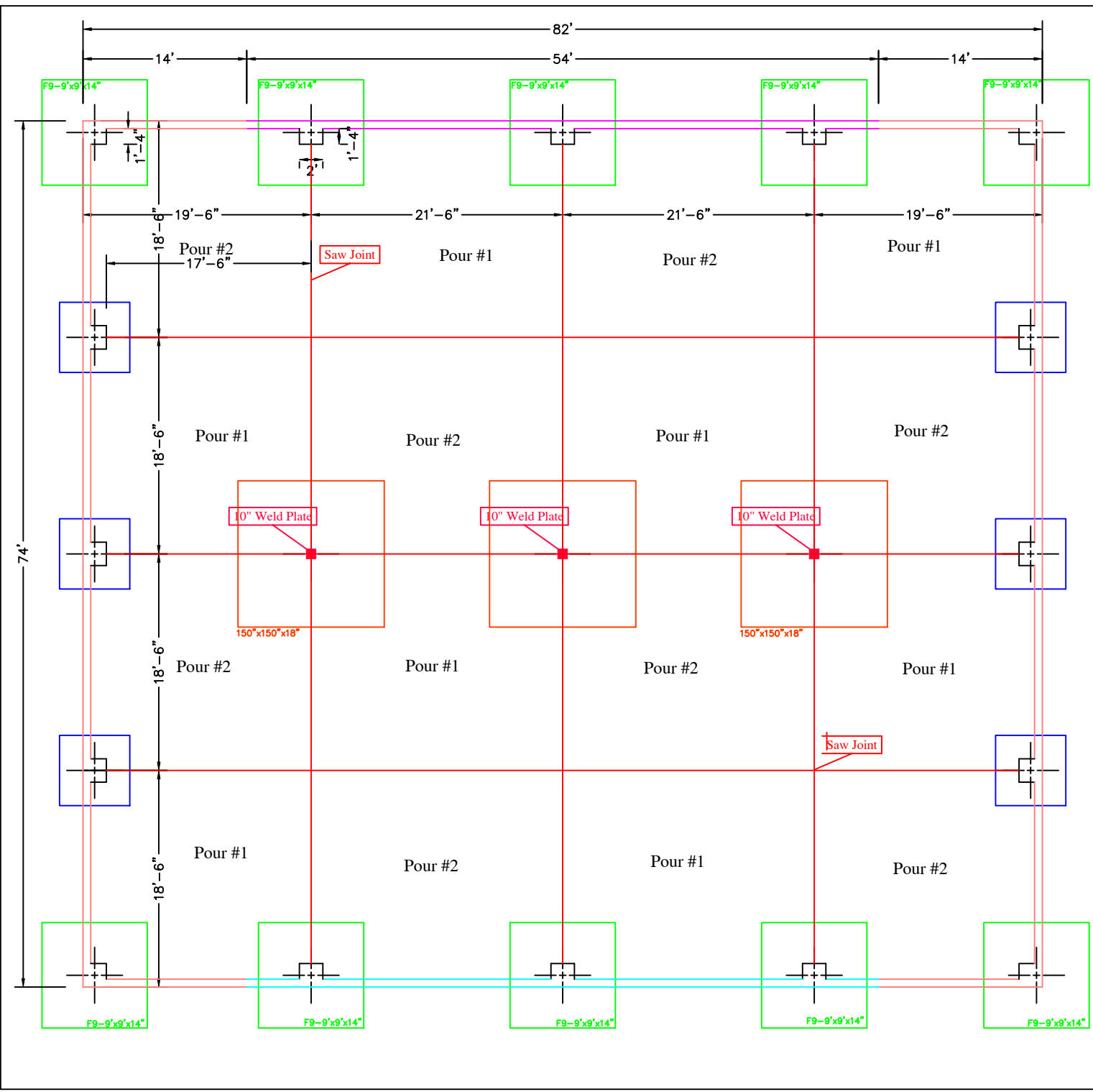
# Foundation





Point	Northing	Easting	Deg Min Sec	Distance
Walls, Piers				
P1	1006.996	1093.313	85 42 45	93.575
P2	1008.329	1093.313	84 53 57	93.684
P3	1008.329	1094.647	84 58 15	95.012
P4	1078.329	1094.647	50 23 20	122.855
P5	1078.329	1093.313	49 59 21	121.831
P6	1079.663	1093.313	49 30 44	122.693
P7	1079.663	1015.313	10 52 52	81.121
P8	1078.329	1015.313	11 3 42	79.812
P9	1078.329	1013.980	10 7 10	79.567
P10	1008.329	1013.980	59 12 49	16.273
P11	1008.329	1015.313	61 27 26	17.432
P12	1006.996	1015.313	65 26 48	16.836
P13	1006.329	1027.313	76 57 12	28.037
P14	1006.329	1081.313	85 32 57	81.559
P15	1006.329	1095.313	86 12 3	95.523
P16	1080.329	1095.313	49 52 34	124.649
P17	1080.329	1081.313	45 20 56	114.301
P18	1080.329	1027.313	18 46 44	84.846
P19	1080.329	1013.313	9 24 37	81.425
P20	1006.329	1013.313	64 34 24	14.741
P21	1061.829	1094.313	56 45 8	112.773
P22	1079.329	1032.813	22 28 18	85.848
P23	1043.329	1094.313	65 19 30	103.790
P24	1024.829	1094.313	75 15 3	97.527
P25	1024.829	1014.313	29 57 44	28.659
P26	1043.329	1014.313	18 16 49	45.632
P27	1061.829	1014.313	13 2 3	63.464
P28	1007.329	1014.313	62 53 6	16.081
P29	1007.329	1032.813	77 24 32	33.622
P30	1007.329	1054.313	82 18 53	54.806
P31	1007.329	1075.813	84 28 41	76.167
P32	1007.329	1094.813	85 34 47	95.096
P33	1079.329	1094.813	50 4 52	123.623
P34	1079.329	1075.813	43 42 6	109.731
P35	1079.329	1054.313	34 23 52	96.141
P36	1079.329	1014.313	10 13 40	80.610
P37	1043.329	1032.813	37 8 12	54.352
P38	1043.329	1054.313	51 25 6	69.479
P39	1043.329	1075.813	60 15 3	87.322

# Total Station



**Foundation Takeoff**

- "F24x12", 54,0,4.00
- "F28x12", 258,0,22.30
- "W8x120", 204,0,50.37
- "W8x48", 54,0,5.33
- "W8x96", 54,0,10.67
- "F12.5", 3,Pier 150"x150"x18", 26.04
- "F6X6", 6,Pier Fig 6' x 6' x 16", 8.00
- "F9X9", 10,Pier Fig 9' x 9' x 14", 35.00
- "SAWJ", 444,0,Saw Joint
- "WP10", 3,10" Weld Plate
- "PL1624120", 12,0,00
- "PC101616", 4,0,00

**Foundation Takeoff**

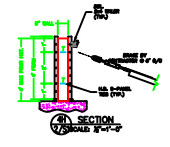
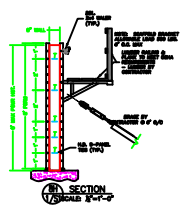
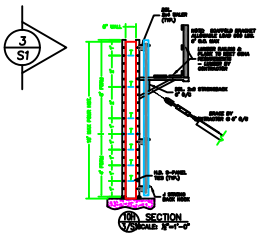
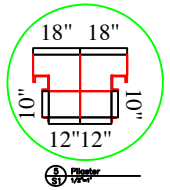
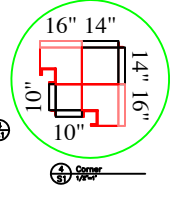
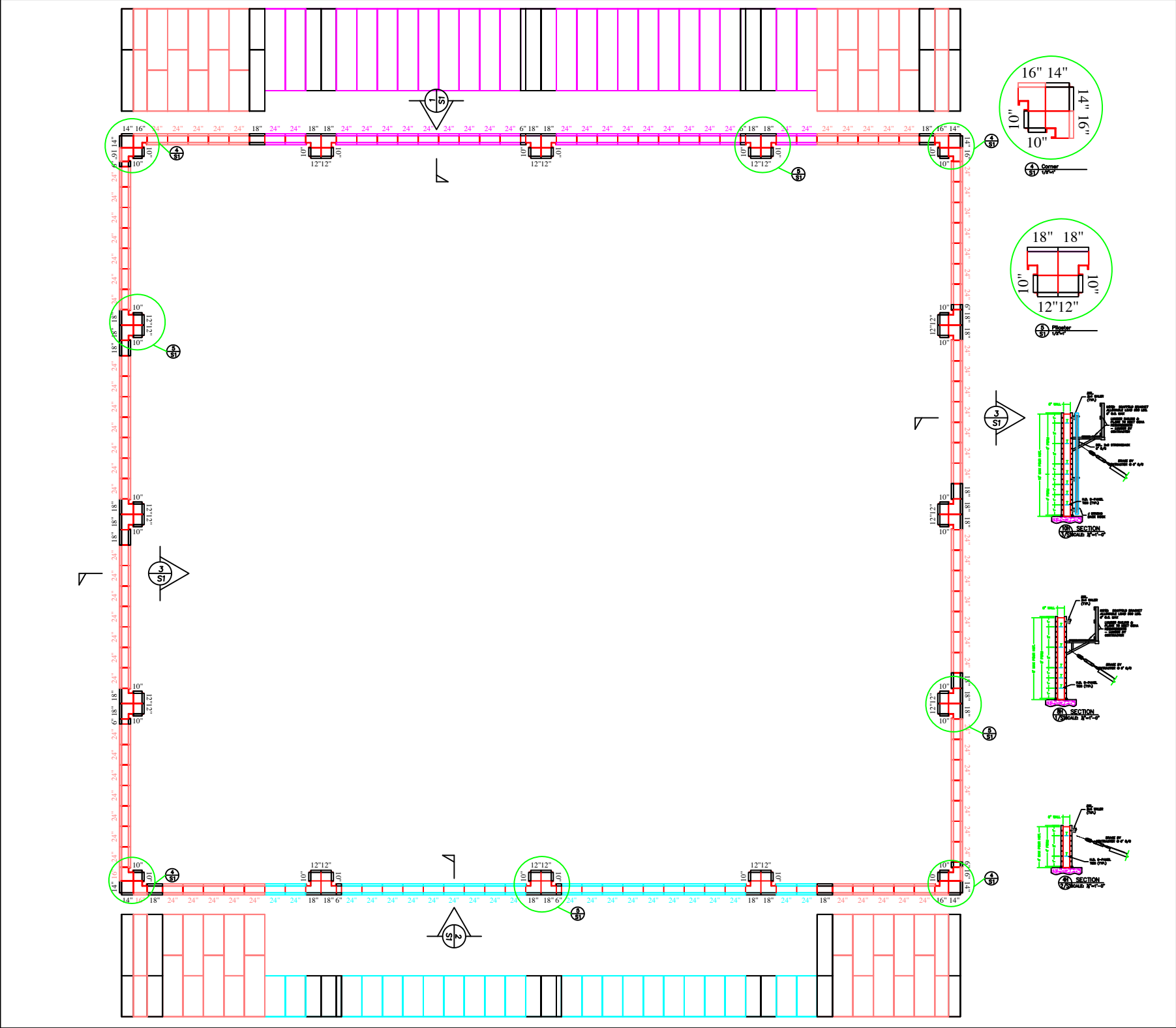
- "P1", 2911,Floor Pour #1- 4", 35.94,613.27 lf.
- "P2", 2911,Floor Pour #2- 4", 35.94,613.27 lf.

**Grading Takeoff**

- "Grading2", 5822, 194.07

**Rebar Takeoff**

- Linear Feet
- "5F102S", 1530.00
- "5F142B", 2082.67
- "5F146S", 876.00
- "5F44B", 99.00
- "5F66S", 396.00
- "5F96B", 432.00
- "5HF", 917.70
- "5HW", 2520.80
- "#5" Linear Feet, 8854.17
- Pounds
- "5F102S", 1595.79
- "5F142B", 2172.22
- "5F146S", 913.67
- "5F44B", 103.26
- "5F66S", 413.03
- "5F96B", 450.58
- "5HF", 957.16
- "5HW", 2629.19
- "#5 LBs", 9234.90
- Count
- "5F102S", 180,9-#5 102" Each Way
- "5F142B", 176,142" Vert 1' OC
- "5F146S", 72,12-#5 146" Each Way
- "5F44B", 27,44" Vert 2' OC
- "5F66S", 72,6-#5 66" Each Way
- "5F96B", 54,96" Vert 1' OC
- "5HF", 46,3 - #5 Cont
- "5HW", 127,10-#5 Cont



# 4 SteelPly Forming

Panel Count - Pour 1

Outside Angle		
36	4'	
36	8'	
Panels		
36	24"	4'
36	24"	8'

Total Panel area: 864.00 sq ft

Panel Count - Pour 2

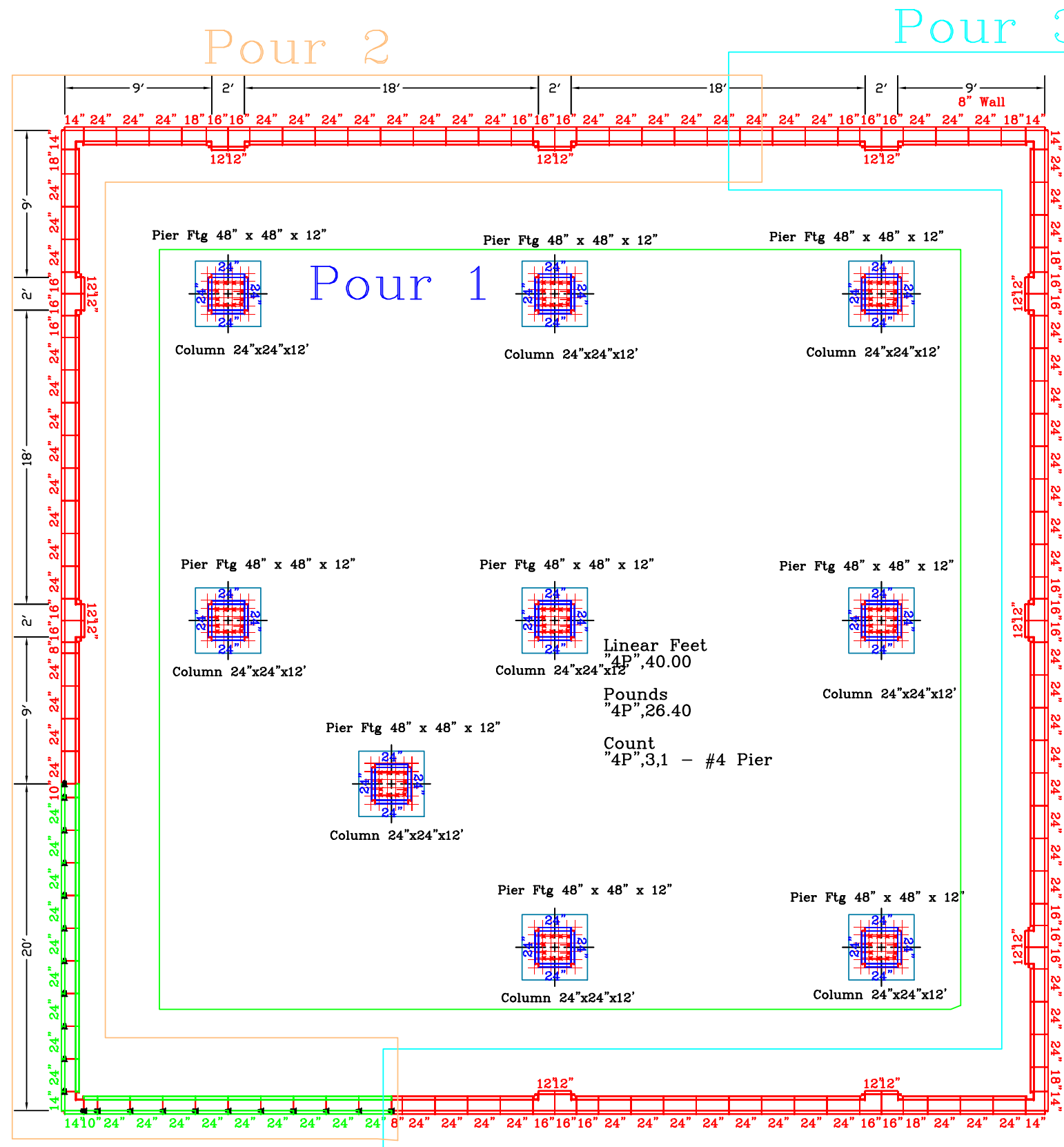
Inside Corner		
8	4" x 4"	4'
1	6" x 6"	4'
8	4" x 4"	8'
2	6" x 6"	8'
Ties		
411	8"	
28	12"	
Outside Angle		
1	4'	
8	4'	
2	8'	
8	8'	
Panels		
2	8"	4'
8	12"	4'
2	14"	4'
12	16"	4'
34	24"	4'
8	18"	6'
56	24"	6'
2	8"	8'
4	10"	8'
8	12"	8'
4	14"	8'
12	16"	8'
70	24"	8'

Total Panel area: 2597.33 sq ft

Panel Count - Pour 3

Inside Corner		
12	4" x 4"	4'
2	6" x 6"	4'
12	4" x 4"	8'
2	6" x 6"	8'
Ties		
432	8"	
41	12"	
Outside Angle		
2	4'	
12	4'	
2	8'	
12	8'	
Panels		
2	8"	4'
12	12"	4'
4	14"	4'
20	16"	4'
46	24"	4'
16	18"	6'
80	24"	6'
2	8"	8'
12	12"	8'
4	14"	8'
20	16"	8'
46	24"	8'

Total Panel area: 2864.00 sq ft



Pour 3

Panel Count - All

Inside Corner		
20	4" x 4"	4'
3	6" x 6"	4'
20	4" x 4"	8'
4	6" x 6"	8'
Scaffold Brackets		
10		
Ties		
824	8"	
69	12"	
Turnbuckles		
10		
Water Clamps		
22		
Outside Angle		
3	4'	
56	4'	
4	8'	
56	8'	
Panels		
4	8"	4'
20	12"	4'
6	14"	4'
32	16"	4'
116	24"	4'
24	18"	6'
136	24"	6'
4	8"	8'
4	10"	8'
20	12"	8'
8	14"	8'
32	16"	8'
152	24"	8'

Total Panel area: 6325.33 sq ft  
Total Wedges: 5008.00

Shipment

Inside Corner		
12	4" x 4"	4'
12	4" x 4"	8'
2	6" x 6"	4'
2	6" x 6"	8'
Ties		
843	8"	
69	12"	
Outside Angle		
36	4'	
36	8'	
Panels		
2	8"	4'
12	12"	4'
4	14"	4'
20	16"	4'
46	24"	4'
16	18"	6'
80	24"	6'
2	8"	8'
4	10"	8'
12	12"	8'
4	14"	8'
20	16"	8'
70	24"	8'

Total Wedges: 5008.00

Commercial Only

# Panel Shipment

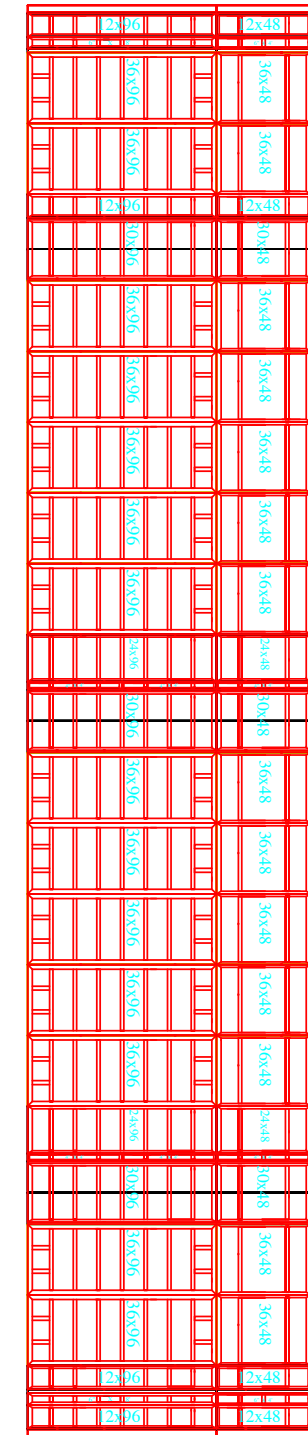
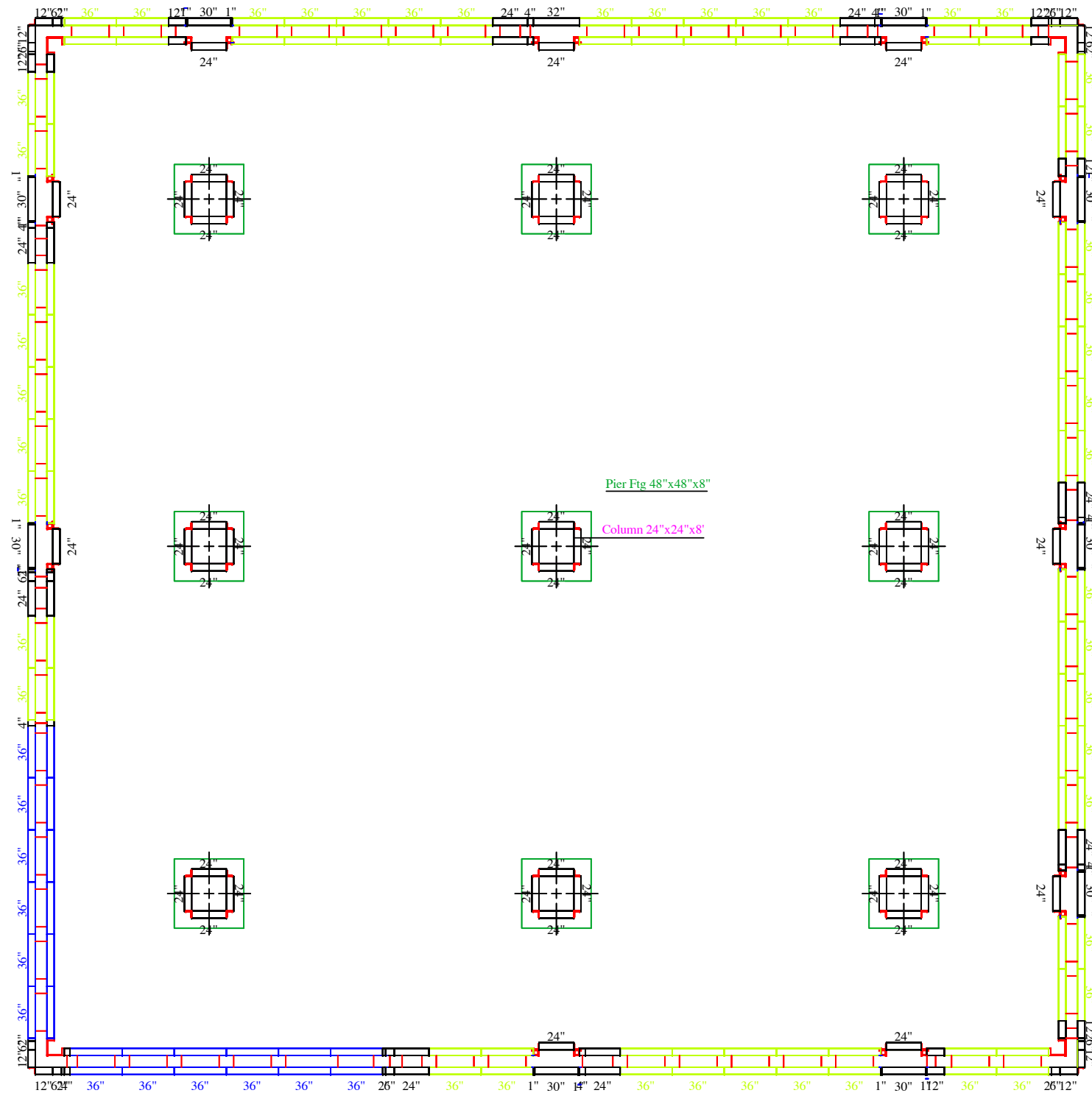
## Panels Count

Inside Corner		
4	12" x 12"	4'
3	12" x 12"	8'
20	4" x 4"	12'
Ties		
544	8"	
Corner Angle		
50		4'
49		8'
Panels		
18	1"	4'
12	2"	4'
16	4"	4'
12	6"	4'
20	12"	4'
62	24"	4'
9	30"	4'
1	32"	4'
116	36"	4'
18	1"	8'
10	2"	8'
12	4"	8'
10	6"	8'
18	12"	8'
62	24"	8'
9	30"	8'
1	32"	8'
92	36"	8'

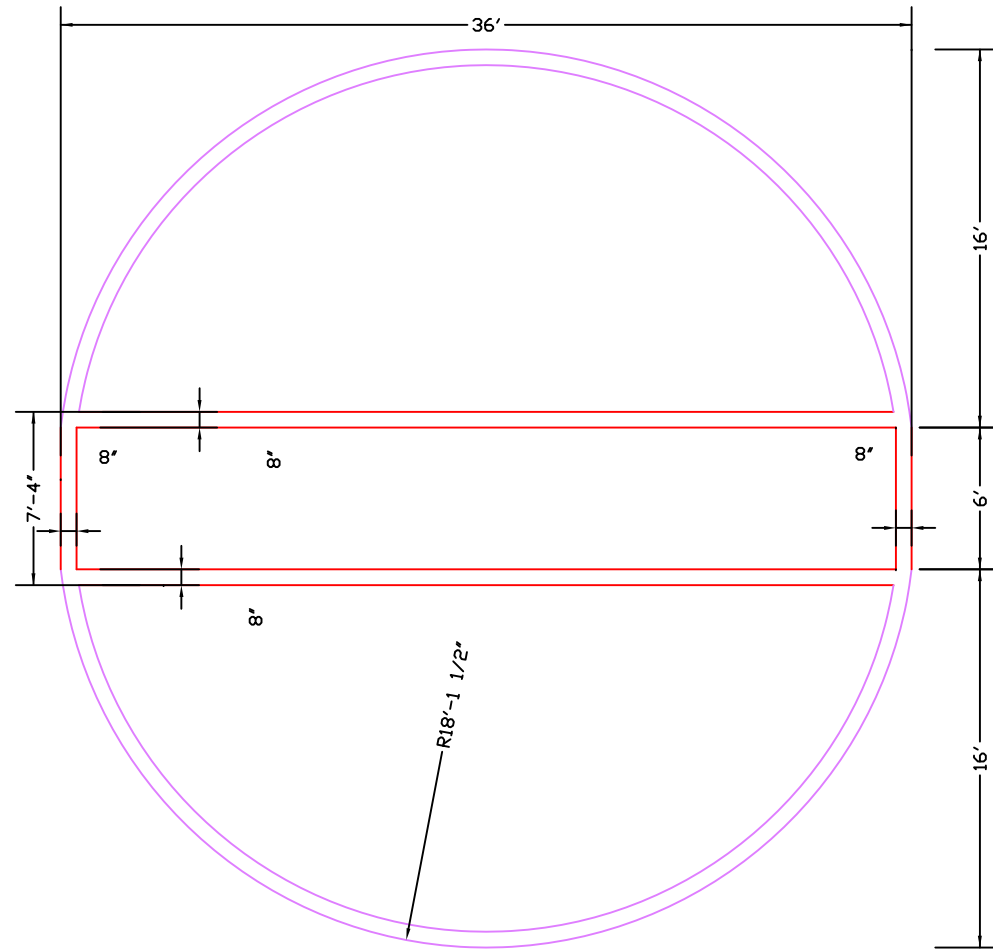
Total Wedges: 5840.00

Long Bolts: 344

Total Panel area: 6010.67 square'



# 6 Symons Sym Ply



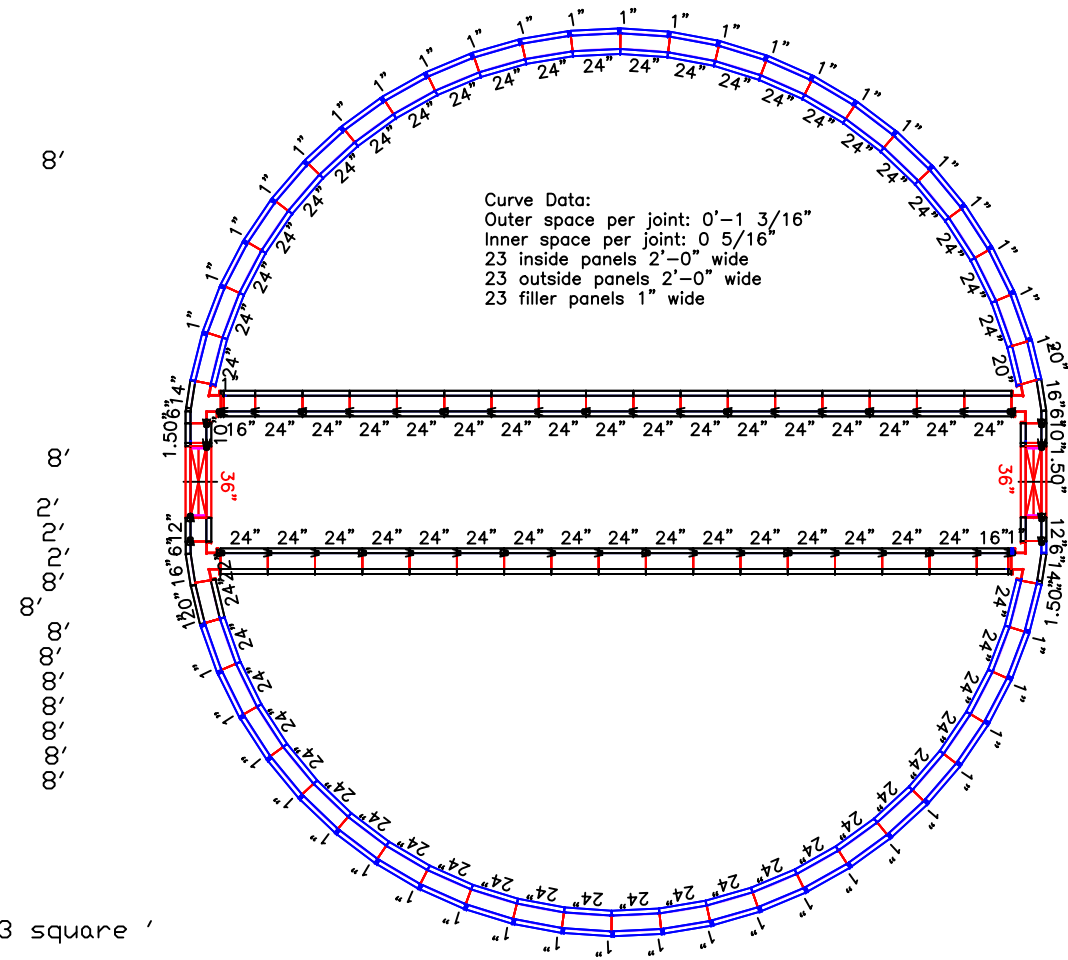
### Panel Count

- Inside Corner  
4 6" x 6"
  - Scaffold Brackets  
23
  - Ties  
495 8"
  - Turnbuckles  
23
  - Water Clamps  
49
  - Water Ties  
49
  - Hinged Inside Corner  
4 6"
  - Panels
- |     |       |
|-----|-------|
| 1   | 1"    |
| 4   | 6"    |
| 48  | 36"   |
| 10  | 1'50" |
| 3   | 6"    |
| 4   | 10"   |
| 4   | 12"   |
| 2   | 14"   |
| 6   | 16"   |
| 4   | 20"   |
| 156 | 24"   |

Total Wedges: 3960.00

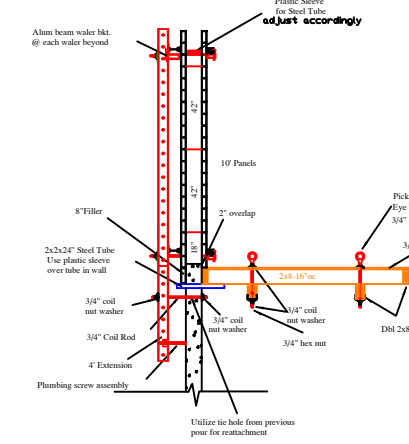
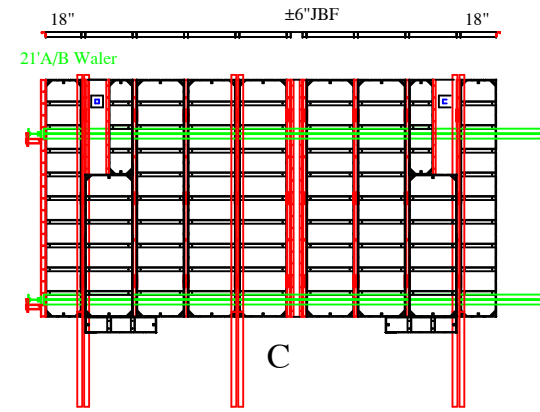
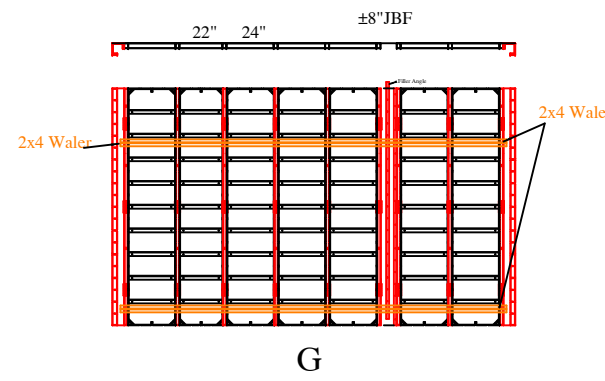
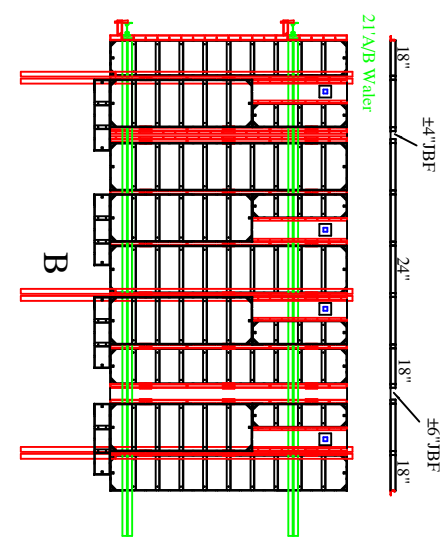
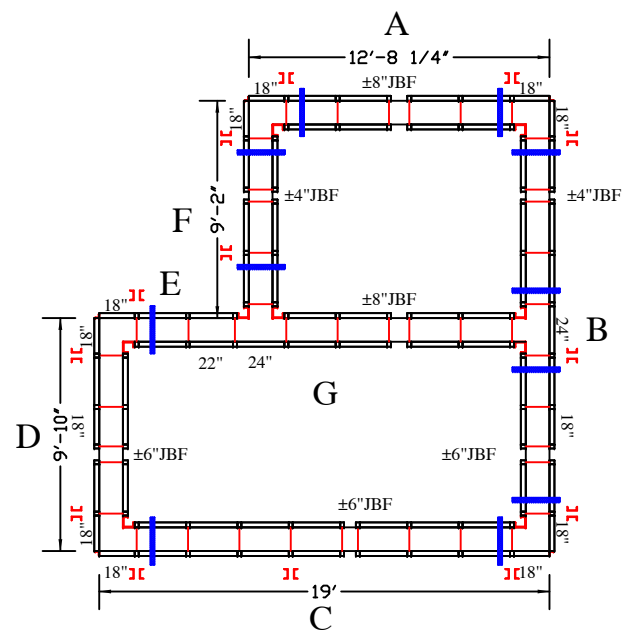
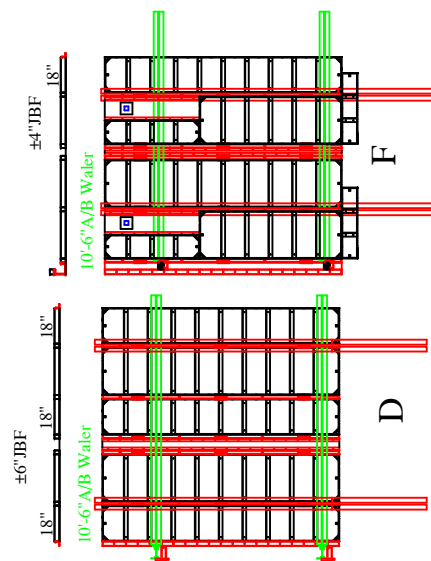
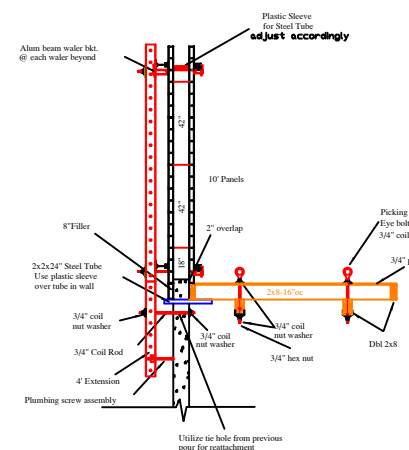
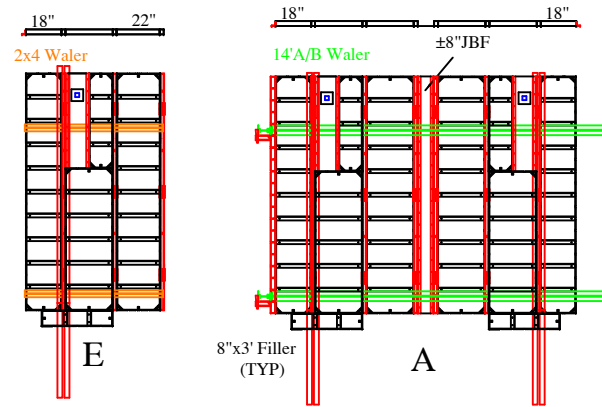
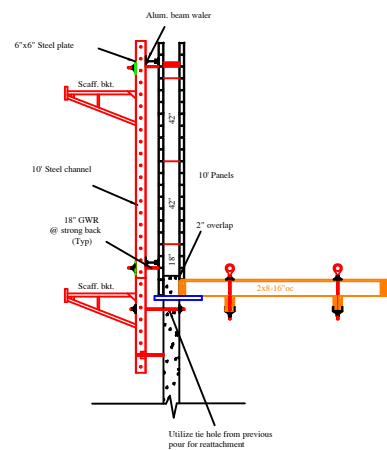
Long Bolts: 466

Total Panel area: 2833.83 square'



# Tank & Tunnel



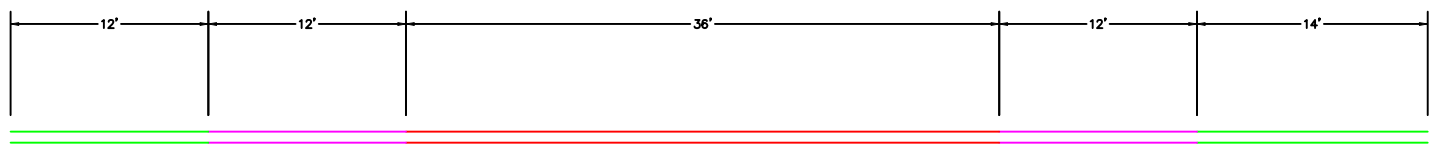


Commercial Only

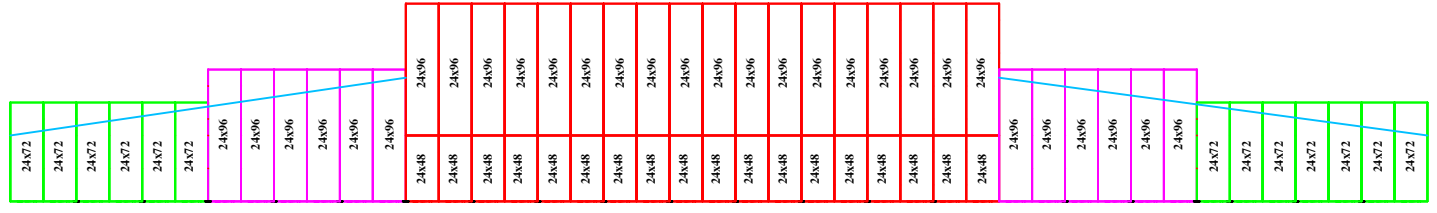
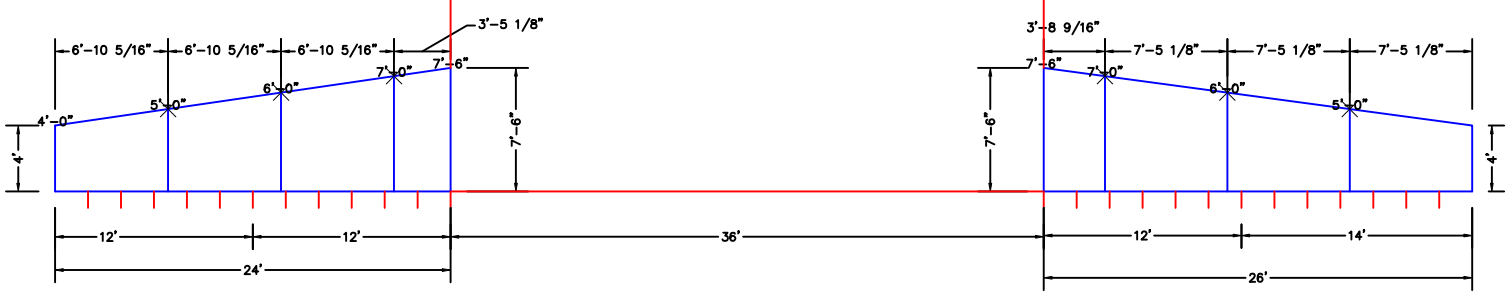
# Gang Adapter Forming



# Slopped Wall

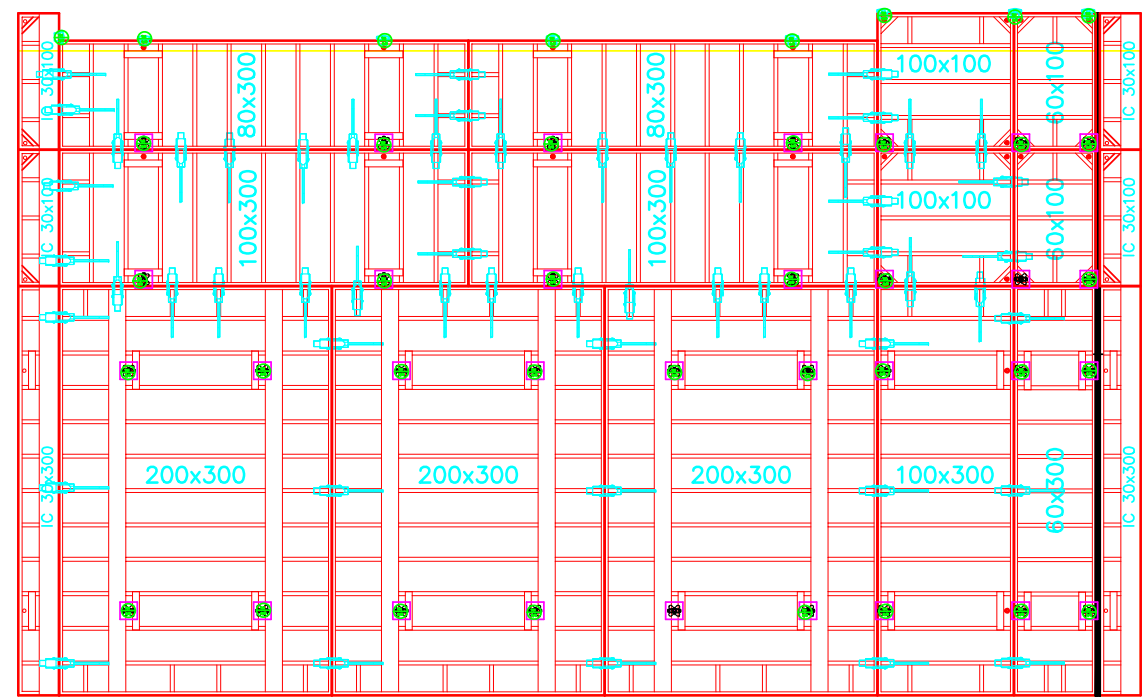
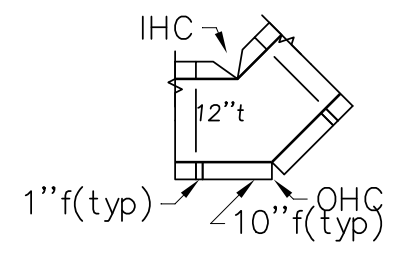
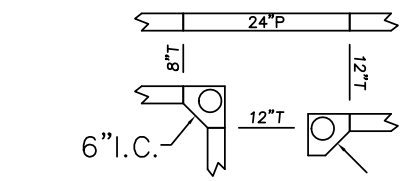
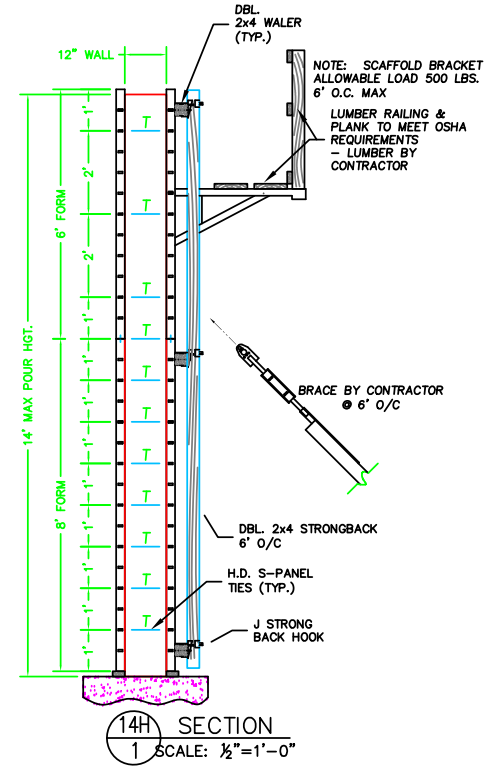


12' High Wall

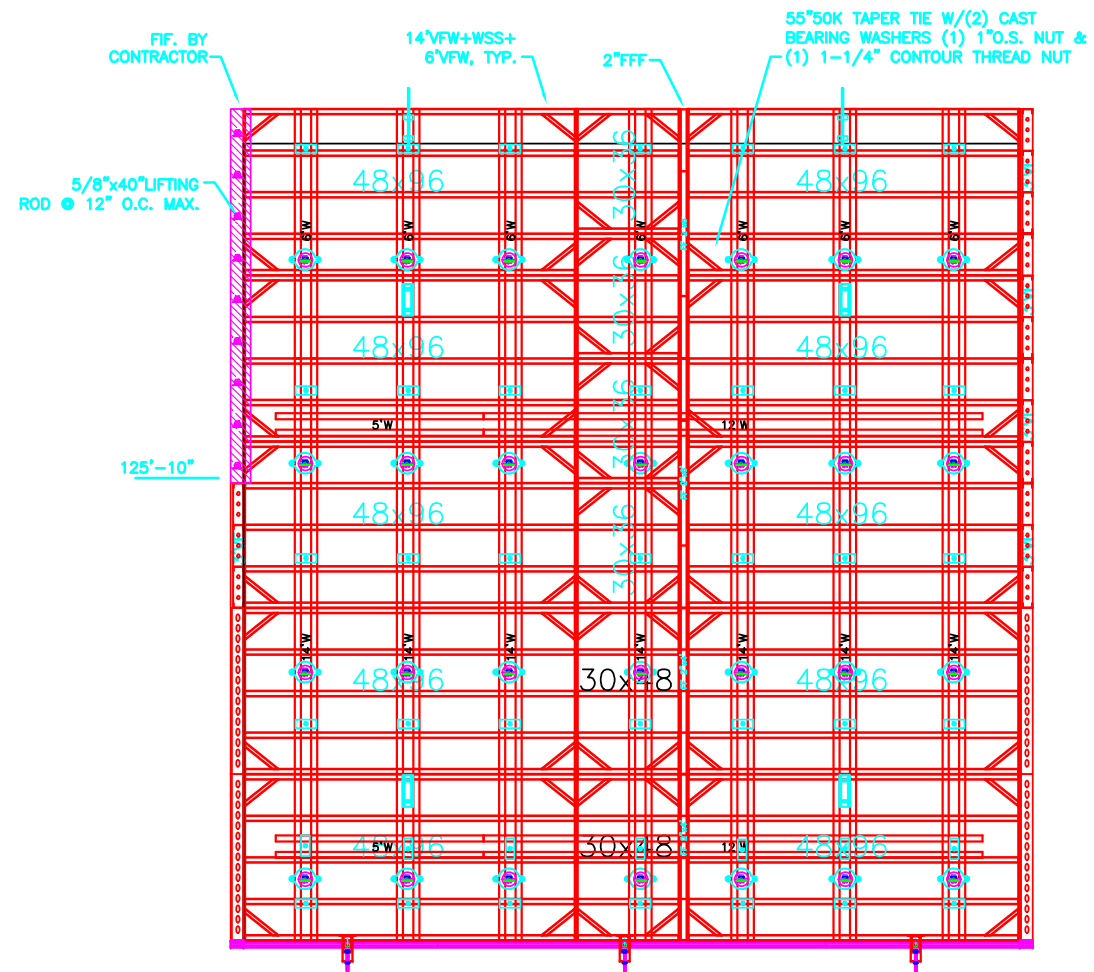
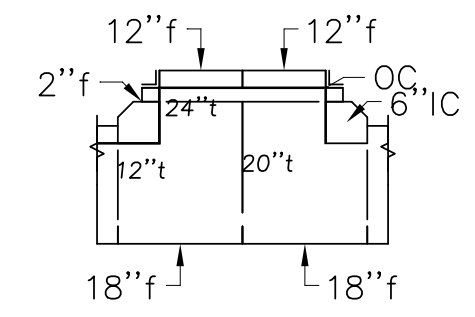
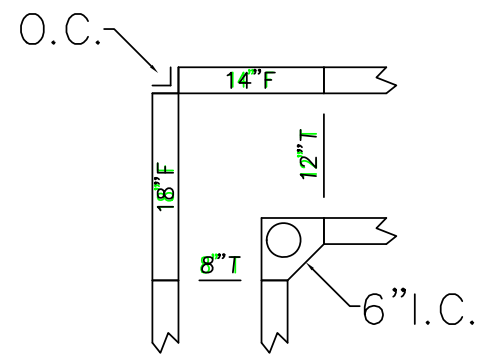
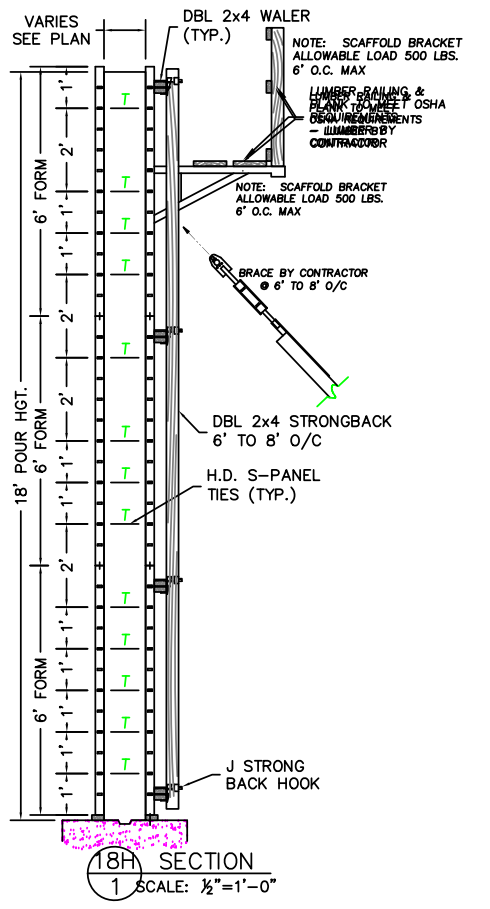


# Details in Seconds

Commercial Only



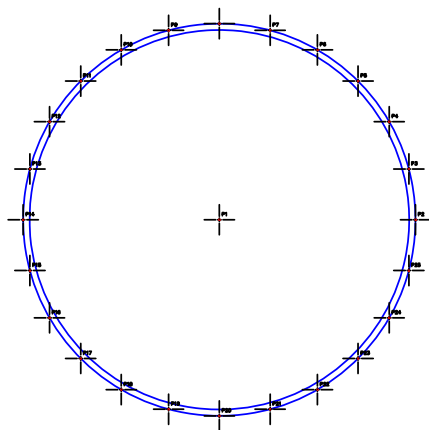
- Panel Count
- 100x100cm Rapid Clamp 2
  - 100x300cm Rapid Clamp 3
  - 200x300cm Rapid Clamp 3
  - 60x100cm Rapid Clamp 2
  - 60x300cm Rapid Clamp 1
  - 80x300cm Rapid Clamp 2
  - Connector Clamp 56
  - Rapid Clamp 30x100cm IC 4
  - Rapid Clamp 30x300cm IC 2
  - RC Washer 32
  - RC Wing Nut 32
  - Taper Tie 41 5-Bin 38
  - Tie Plate 32
  - Top Tie Bracket 8



- Panel Count
- 1" O.S. Nut 28
  - 1-1/4" Contour Thread Nut 28
  - 3" Outside Corner Angle 5
  - 4ft\_Outside\_Corner\_Angle 4
  - 50k\_Cast\_Brg\_Washer 56
  - Flex Filler Form 2x48in 2
  - Flex Filler Form 2x72 2
  - Lift\_Braket\_Waler 2
  - Plate\_Washer 42
  - Shear Wall Bracket 3
  - Taper Tie 55 3-4in 28
  - Versiform 30in x 3ft Ver 4
  - Versiform 30in x 4ft Ver 2
  - Versiform 4ft x 8ft Hor 10
  - Waler 5" x 12' 2
  - Waler 5" x 14' 7
  - Waler 5" x 5' 2
  - Waler 5" x 6' 7
  - Waler\_Connect 4

## Point Layout/Concrete Takeoff

Concrete and Rebar Takeoff in Under 3 Minutes

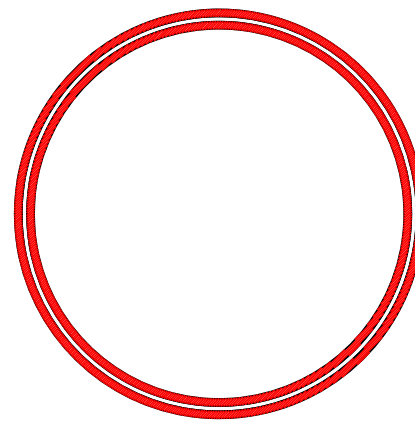


**Foundation Takeoff**  
 Concrete & Rebar  
 "Mud Slab 4x60", 352.9, 21.78  
 "Wall 18x48", 352.9, 78.42  
 Linear Feet  
 "5W132S", 2428.80  
 "6C", 3387.84  
 Pounds  
 "5W132S", 2533.24  
 "6C", 5086.54  
 Count  
 "5W132S", 192, #5 Stirrup 132" @ 22" OC  
 "6C", 170, #6 Cont.

Point	Marking	Counting	Qty	Min	Max	Distance
P1	1100.243	1422.88	79	30	11	432.389
P2	1100.243	1422.88	79	30	11	432.389
P3	1118.243	1401.833	79	30	20	408.367
P4	1118.243	1401.833	79	30	20	408.367
P5	1127.243	1421.108	79	30	20	427.380
P6	1127.243	1421.108	79	30	20	427.380
P7	1120.243	1443.883	79	30	20	412.365
P8	1120.243	1443.883	79	30	20	412.365
P9	1118.243	1421.108	79	30	20	408.367
P10	1118.243	1421.108	79	30	20	408.367
P11	1100.243	1422.88	79	30	11	432.389
P12	1100.243	1422.88	79	30	11	432.389
P13	1100.243	1422.88	79	30	11	432.389
P14	1100.243	1422.88	79	30	11	432.389
P15	1100.243	1422.88	79	30	11	432.389
P16	1071.243	1421.108	79	30	20	408.367
P17	1071.243	1421.108	79	30	20	408.367
P18	1071.243	1421.108	79	30	20	408.367
P19	1071.243	1421.108	79	30	20	408.367
P20	1071.243	1421.108	79	30	20	408.367
P21	1071.243	1421.108	79	30	20	408.367
P22	1071.243	1421.108	79	30	20	408.367
P23	1071.243	1421.108	79	30	20	408.367
P24	1071.243	1421.108	79	30	20	408.367
P25	1071.243	1421.108	79	30	20	408.367
P26	1071.243	1421.108	79	30	20	408.367
P27	1071.243	1421.108	79	30	20	408.367
P28	1071.243	1421.108	79	30	20	408.367
P29	1071.243	1421.108	79	30	20	408.367
P30	1071.243	1421.108	79	30	20	408.367

Total Station Layout, Point File and Background File in under 2 Min.

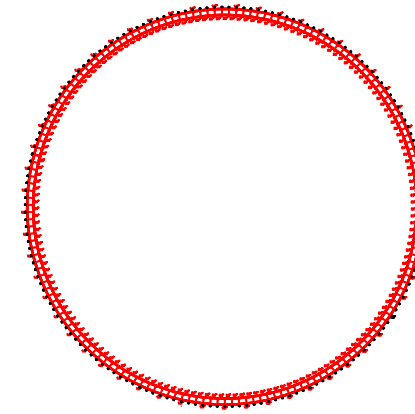
## Excavation/Backfill



"Excavation", 354.64, 1915  
 "Backfill Inside", 166.52, 674  
 "Backfill Outside", 177.38, 718  
 "Backfill All", 343.89, 1393  
 "Haul", 10.75

Excavation, Backfill Inside & Outside and Hauling in under 2 Minutes

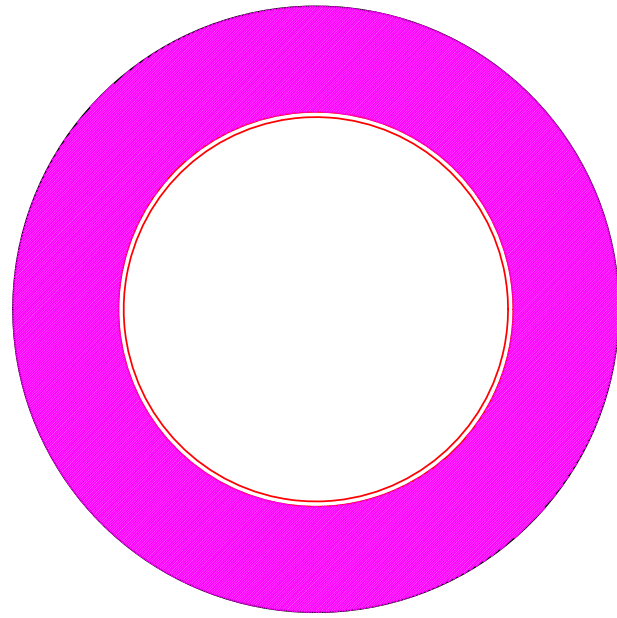
## Panel Layout



**Panel Count**  
 Ties 344  
 Turnbuckles 18"  
 172  
 Water Clamps 172  
 Water Ties 172  
 Panels 57  
 2 1.50" 4'  
 342 12" 4'  
 24" 4'  
 Total Wedges: 3896  
 Long Bolts: 228  
 Total Panel area: 2772.50 sq ft

Panel layout and Inventory in Less Ten 3 Minutes

## Craneway Grading & Fabric

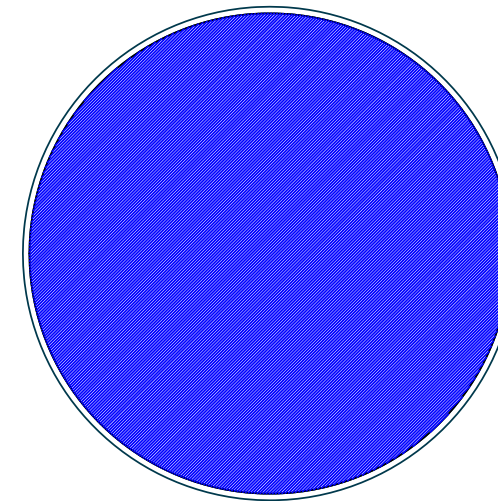


Grade 6" Rock, 372.63 Tons  
 Geotextile Fabric, 13415 Sq Ft

Grading and Geotextile Fabric in Less Than 2 Minutes.

# Fast

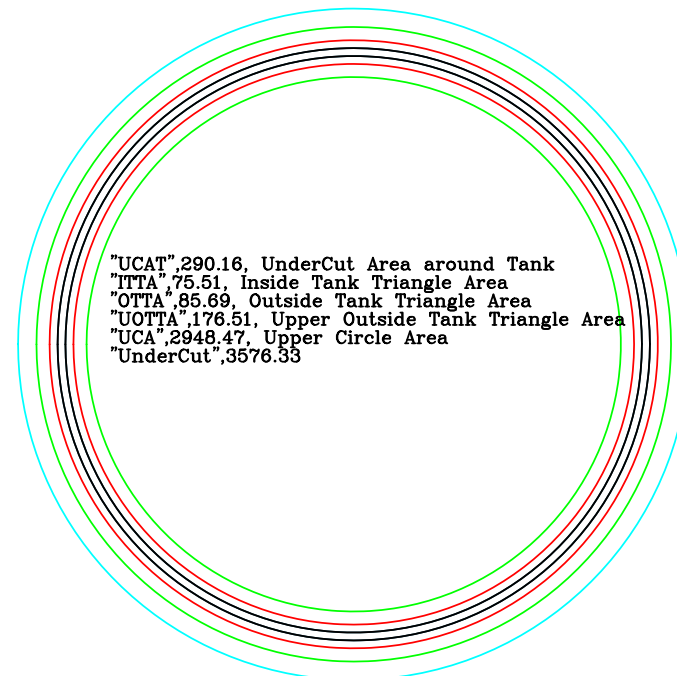
## Crown Up/Down Grading



"Grading 12", 9388, 521.58  
 "CrownUp", 52.83, 5.47, 9389  
 "Tank6", 9388, Tank Flatwork 6", 173.86,

Crown Up Or Down in Less Than 1 Minute

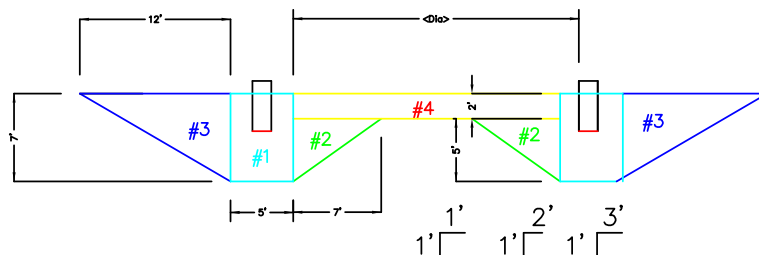
## Undercut Excavation



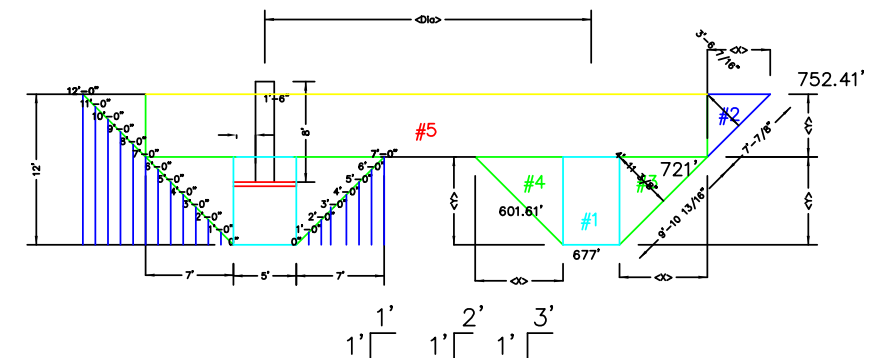
"UCAT", 290.16, UnderCut Area around Tank  
 "ITTA", 75.51, Inside Tank Triangle Area  
 "OTTA", 85.69, Outside Tank Triangle Area  
 "UOTTA", 176.51, Upper Outside Tank Triangle Area  
 "UCA", 2948.47, Upper Circle Area  
 "UnderCut", 3576.33

Any of the Undercut Calculations In Less Than 3 Minutes.

## Undercut Calculation

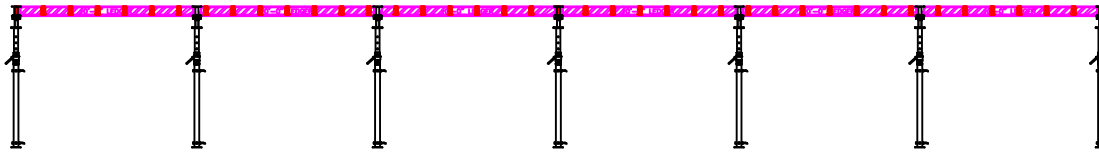
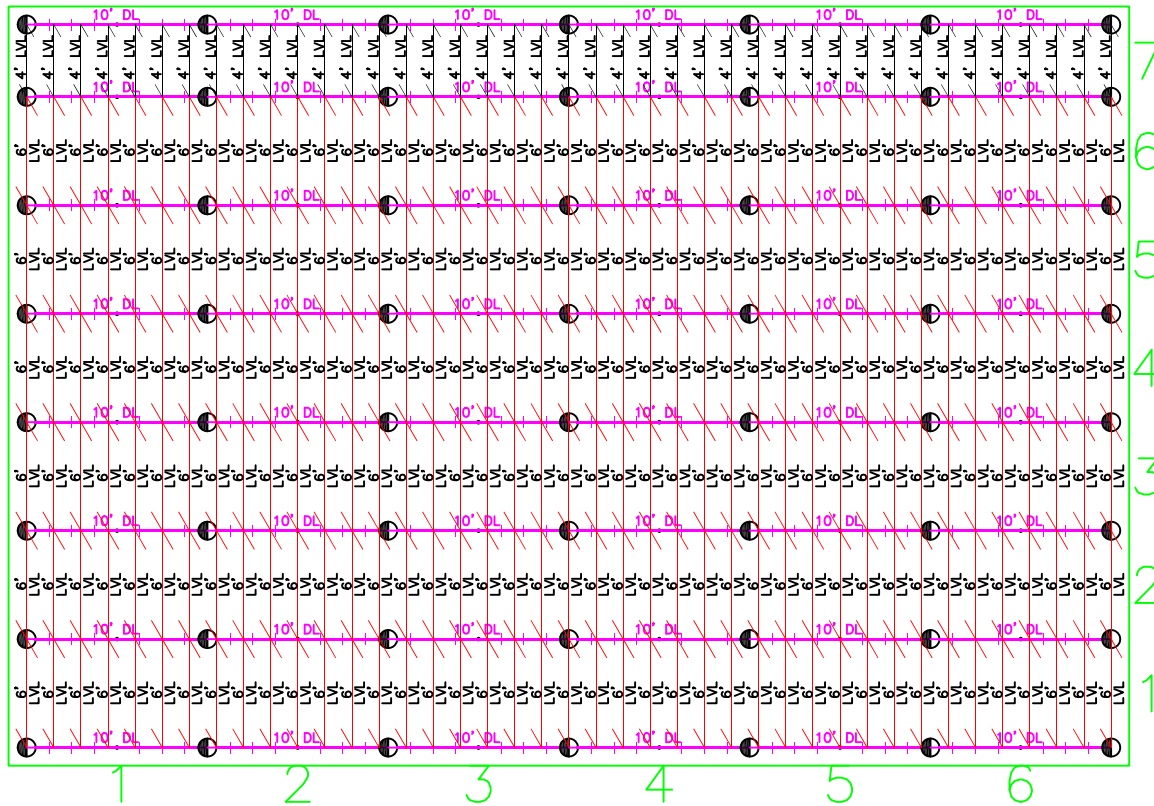


## Undercut Calculation



Com and Tank

# Fast Tank Calculation Features



## Layouts in Minutes

Count	
10' DL Ledge	48
4' LVL Joist	41
6' LVL Joist	246
Plastic Spud	48
Primary Post	56

# Proshore